

A	Updated to include tree survey	MW	19.08.14	SPR
Mark	Revision	Drawn	Date	Chkd

SCALING NOTE: Do not scale from this drawing. If in doubt, ask.  
UTILITIES NOTE: The position of any existing public or private sewers, utility services, plant or apparatus shown on this drawing is believed to be correct, but no warranty to this is expressed or implied. Other such plant or apparatus may also be present but not shown. The Contractor is therefore advised to undertake his own investigation where the presence of any existing sewers, services, plant or apparatus may affect his operations.

Drawing Issue Status  
**FOR TENDER**

**PARK PREWETT, BASINGSTOKE**  
**THE AVENUE**  
**EXSITING TOPOGRAPHICAL SURVEY**

Client

**Taylor Wimpey**

Date of 1st Issue  
27.05.2014

Drawn by  
MW

A1 Scale  
1:500

Checked by  
SPR

Drawing Number  
**06199/900/100**

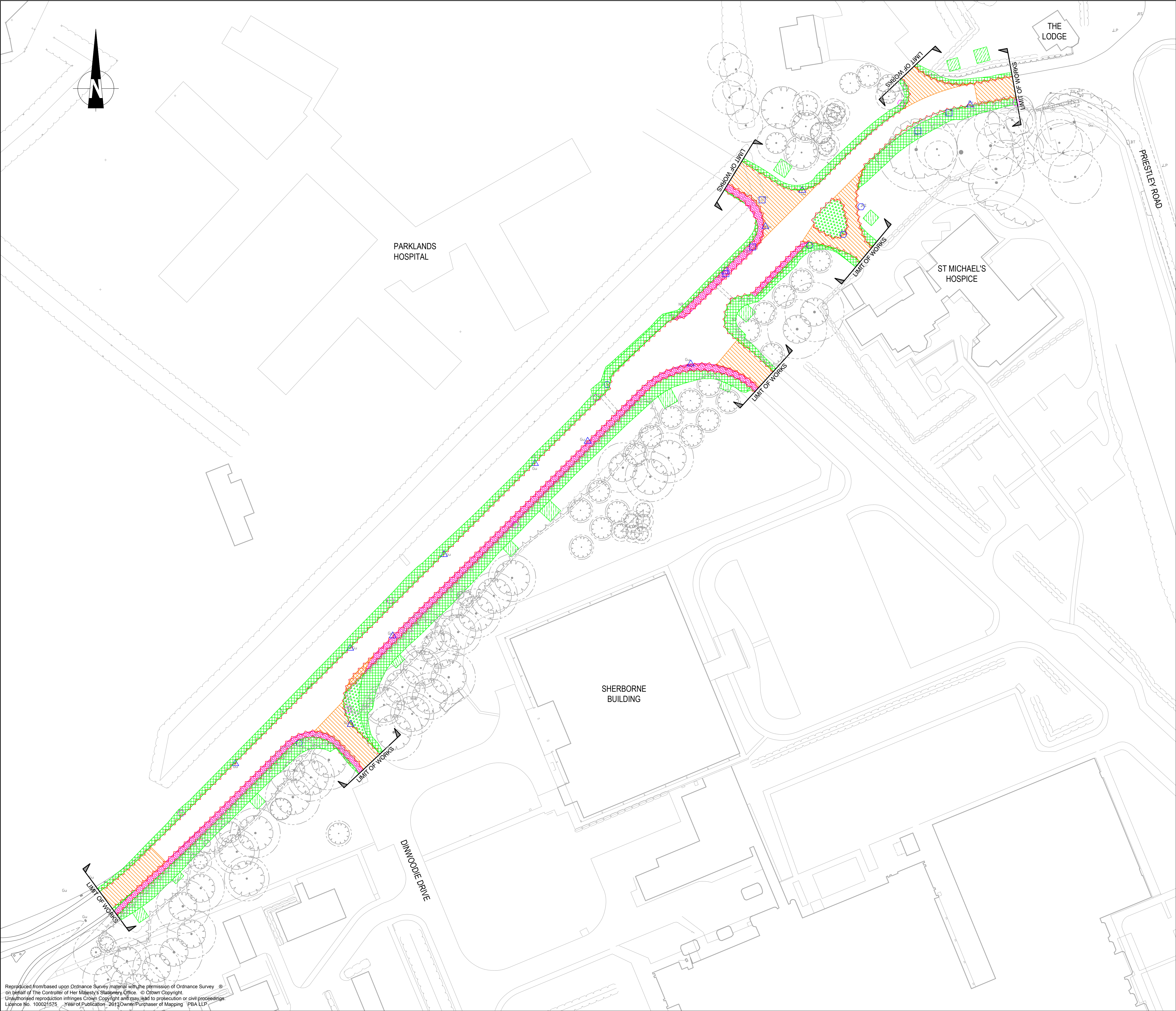
Revision  
**A**

**pba**  
peterbrett

Offices throughout  
the UK and Europe  
**www.peterbrett.com**  
© Peter Brett Associates LLP  
READING  
Tel: 0118 950 0761

Reproduced from based upon Ordnance Survey material with the permission of Ordnance Survey © on behalf of The Controller of Her Majesty's Stationary Office. © Crown Copyright.  
Unauthorised reproduction infringes Crown Copyright and may lead to prosecution or civil proceedings.  
Licence No. 100021575 Year of Publication: 2013 Owner/Purchaser of Mapping PBA LLP





- NOTES:
- EXISTING FOLIAGE AND TREES TO BE TRIMMED BACK TO ACCOMODATE NEW FOOTWAY/CYCLEWAY.
  - ANY ADDITIONAL STREET FURNITURE IDENTIFIED ON SITE TO BE ADJUSTED TO NEW LAYOUT AND LEVELS AS REQUIRED.
  - LIMIT OF WORKS TO BE AGREED WITH ADJACENT LAND OWNERS PRIOR TO COMMENCEMENT OF WORKS.
- KEY:
- EXTENT OF EXISTING KERB/EDGING INCLUDING BACKING & BASE TO BE TAKEN UP AND REMOVED TO TIP OFF SITE
  - EXISTING GULLIES TO BE REMOVED. GRATING, FRAME AND GULLY POT TO BE REMOVED AND IN-FILLED WITH COMPACTED SUB-BASE.
  - EXISTING COVERS AND FRAMES TO BE ADJUSTED TO NEW CARRIAGEWAY OR FOOTWAY SURFACE LEVEL
  - EXISTING TRAFFIC SIGN INCLUDING POST AND FOUNDATION TO BE TAKEN UP AND REMOVED TO TIP OFF SITE
  - EXISTING STREET LIGHTING COLUMN INCLUDING FOUNDATION TO BE TAKEN UP AND REMOVED TO TIP OFF SITE
  - EXISTING TRAFFIC SIGN TO BE RELOCATED AS REQUIRED
  - EXISTING GRASS AREAS TO BE STRIPPED OF TOPSOIL AND EXCAVATED TO FORMATION LEVEL OF NEW CARRIAGEWAY CONSTRUCTION. EXISTING SUBGRADE TO BE LEVELLED AND COMPACTED.
  - EXISTING GRASS AREAS TO BE STRIPPED OF TOPSOIL
  - EXISTING VEGETATION TO BE CLEARED AS REQUIRED IN PREPARATION FOR SOAKAWAY CONSTRUCTION
  - EXISTING CARRIAGEWAY CONSTRUCTION TO BE TAKEN UP AND REMOVED TO TIP OFF SITE
  - EXISTING FOOTWAY CONSTRUCTION TO BE TAKEN UP AND REMOVED TO TIP OFF SITE
  - EXISTING FOOTWAY CONSTRUCTION TO BE PERFORATED TO THE FULL DEPTH OF CONSTRUCTION WITH HOLES A MINIMUM 100mm DIAMETER

PLEASE NOTE THIS DRAWING HAS NOT YET RECEIVED TECHNICAL APPROVAL AND IS THEREFORE POTENTIALLY SUBJECT TO CHANGE

A	Description in key for removal of existing gullies, traffic signs & street lighting columns amended in accordance with HCC's comments.	MW	19.08.14	SPR
Mark	Revision	Drawn	Date	Chkd

SCALING NOTE: Do not scale from this drawing. If in doubt, ask.  
UTILITIES NOTE: The position of any existing public or private sewers, utility services, plant or apparatus shown on this drawing is believed to be correct, but no warranty to this is expressed or implied. Other such plant or apparatus may also be present but not shown. The Contractor is therefore advised to undertake his own investigation where the presence of any existing sewers, services, plant or apparatus may affect his operations.

Drawing Issue Status  
**FOR TENDER**

PARK PREWETT, BASINGSTOKE  
THE AVENUE  
SITE CLEARANCE

Client

**Taylor Wimpey**

Date of 1st Issue  
27.05.2014

Drawn by  
AM

A1 Scale  
1:500

Checked by  
MW

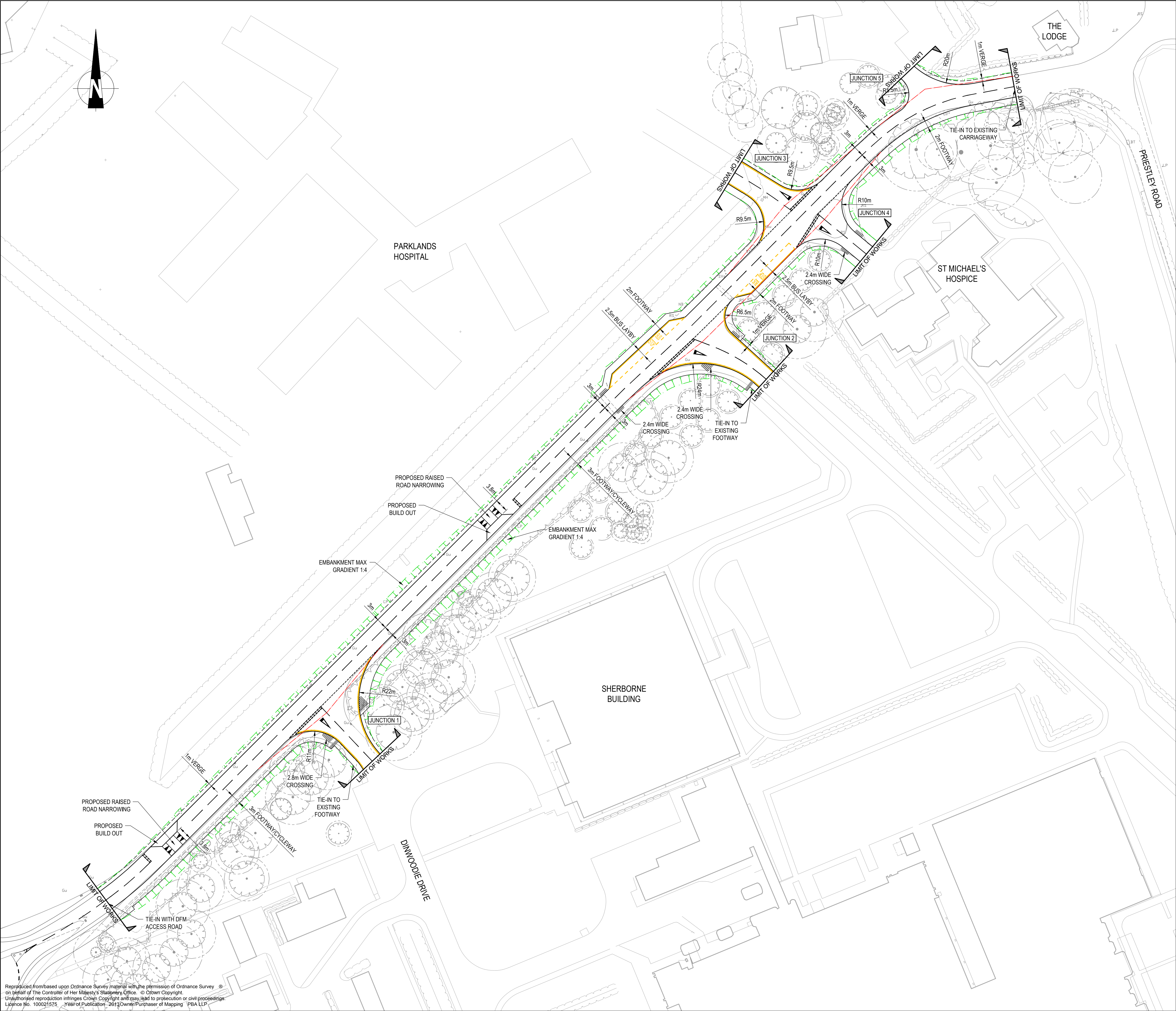
Drawing Number  
06199/900/101

Revision  
A

**pba**  
peterbrett

Offices throughout the UK and Europe  
**www.peterbrett.com**  
© Peter Brett Associates LLP  
READING  
Tel: 0118 950 0761





- NOTES:
- LIMIT OF WORKS TO BE AGREED WITH ADJACENT LAND OWNERS PRIOR TO COMMENCEMENT OF WORKS.
- KEY:
- JUNCTION VISIBILITY SPLAY 2.4m x 25m

PLEASE NOTE THIS DRAWING HAS NOT YET  
RECEIVED TECHNICAL APPROVAL AND IS  
THEREFORE POTENTIALLY SUBJECT TO CHANGE

B	Tactile paving locations & widths amended. Western road narrowing moved to opposite side. Embankments amended to 1:4. Footway extended at Junction 2 & tactile added.	DP	19.08.14	MW
A	Junction visibility splays added	MW	15.07.14	SPR
Mark	Revision	Drawn	Date	Chkd

SCALING NOTE: Do not scale from this drawing. If in doubt, ask.  
UTILITIES NOTE: The position of any existing public or private sewers, utility services, plant or apparatus shown on this drawing is believed to be correct, but no warranty to this is expressed or implied. Other such plant or apparatus may also be present but not shown. The Contractor is therefore advised to undertake his own investigation where the presence of any existing sewers, services, plant or apparatus may affect his operations.

Drawing Issue Status

FOR TENDER

PARK PREWETT, BASINSTOKE  
THE AVENUE  
GENERAL ARRANGEMENT

Client

**Taylor Wimpey**

Date of 1st Issue  
27.05.2014

Drawn by  
AM

A1 Scale  
1:500

Checked by  
MW

Drawing Number  
06199/900/102

Revision  
B

**pba**  
peterbrett

Offices throughout  
the UK and Europe  
**www.peterbrett.com**  
© Peter Brett Associates LLP  
READING  
Tel: 0118 950 0761





- NOTES:**
- FOR CARRIAGEWAY & FOOTWAY CONSTRUCTION DETAILS REFER TO PBA STANDARD DETAIL 06199/900/SD01 & SD02.
  - FULL DEPTH CARRIAGEWAY CONSTRUCTION SPECIFIED IS BASED ON A MINIMUM CBR SUBGRADE VALUE OF 5% IN ACCORDANCE WITH THE CBR TEST RESULTS. THE EXACT CBR VALUE OF THE SUBGRADE IS TO BE CONFIRMED ON SITE.
  - BOND COAT (K1-70) TO BE APPLIED TO ALL EXISTING BITUMINOUS CONSTRUCTION PRIOR TO OVERLAY IN ACCORDANCE WITH BS 594987.
  - IF EXISTING BOUND PAVEMENT LAYERS FALL BELOW 50MM IN DEPTH, IMMEDIATE CONSULTATION WITH THE HIGHWAY AUTHORITY IS REQUIRED.
  - LIMIT OF WORKS TO BE AGREED WITH ADJACENT LAND OWNERS PRIOR TO COMMENCEMENT OF WORKS.
  - EXACT LOCATION AND LAYOUT OF EMERGENCY HELICOPTER LANDING ACCESS TO BE CONFIRMED AND AGREED ON SITE.

- KEY:**
- HB2 PRECAST CONCRETE KERB TYPE PC1 TO BE INSTALLED BETWEEN LIMITS IN ACCORDANCE WITH HCC STANDARD DETAIL HCC9/C/010A INCORPORATING 100mm UPSTAND.
  - EF PRECAST CONCRETE EDGING TYPE EF TO BE INSTALLED BETWEEN LIMITS IN ACCORDANCE WITH HCC STANDARD DETAIL HCC9/C/045C.
  - CS PRECAST CONCRETE KERB TYPE PC4 TO BE INSTALLED BETWEEN LIMITS IN ACCORDANCE WITH HCC STANDARD DETAIL HCC/C/010A LAID FLUSH AT CROSSINGS.
  - BN PRECAST CONCRETE KERB TYPE PC3 TO BE INSTALLED BETWEEN LIMITS IN ACCORDANCE WITH HCC STANDARD DETAIL HCC/C/010A INCORPORATING 25mm UPSTAND.
  - KK PRECAST CONCRETE KASSEL KERB TO BE INSTALLED BETWEEN LIMITS IN ACCORDANCE WITH HCC STANDARD DETAIL HCC/C/035C.
  - PROPOSED BUFF COLOURED TACTILE BLISTER PAVING TYPE 2 IN ACCORDANCE WITH HCC STANDARD DETAIL HCC/C/060B.
  - PROPOSED BUFF COLOURED TACTILE CORDUROY PAVING
  - FULL DEPTH CARRIAGEWAY CONSTRUCTION COMPRISING:
    - 45mm HRA 35/14F SURF 40/60 TO CLAUSE 943 MINIMUM PSV: 60
    - 55mm AC20 DENSE BIN 40/60 TO CLAUSE 929
    - 135mm COLD RECYCLED BITUMINOUS BASE REGULATING MATERIAL 40/60 TO CLAUSE 948SR
    - 225mm SUB-BASE (SEE NOTE 2)
  - CARRIAGEWAY OVERLAY COMPRISING:
    - 45mm HRA 35/14F SURF 40/60 TO CLAUSE 943 MINIMUM PSV: 60
    - 55mm AC20 DENSE BIN 40/60 TO CLAUSE 929
    - 100mm COLD RECYCLED BITUMINOUS BASE MATERIAL 40/60 TO CLAUSE 948SR
    - 0-300mm COLD RECYCLED BITUMINOUS BASE REGULATING MATERIAL 40/60 TO CLAUSE 948SR
    - BOND COAT (K1-70) TO BE APPLIED TO EXISTING ROAD SURFACE
  - FOOTWAY CONSTRUCTION COMPRISING:
    - 20mm AC6 DENSE SURF 100/150 PSV 55 TO BS EN 13108-1
    - 45 AC20 OPEN BIN 100/150 TO BS EN 13108-1
    - 150mm (MINIMUM) SUB-BASE
  - SOFT LANDSCAPING - GRASSED VERGE AND EMBANKMENT
  - PROPOSED ROAD HUMP. FOR CONSTRUCTION DETAILS REFER TO HCC STANDARD DETAIL HCC/C/100C.

PLEASE NOTE THIS DRAWING HAS NOT YET RECEIVED TECHNICAL APPROVAL AND IS THEREFORE POTENTIALLY SUBJECT TO CHANGE

C	Kassel kerbs added at the additional bus stop locations. Emergency helicopter landing access location added.	MW	16.09.14	SPR
B	Kassel kerbs added at bus stops.	MW	28.08.14	SPR
A	Tactile paving locations & widths amended. Western road narrowing moved to opposite side. Footway extended at Junction 2. Pavement construction & kerb upstand amended.	MW	19.08.14	SPR
Mark	Revision	Drawn	Date	Chkd

SCALING NOTE: Do not scale from this drawing. If in doubt, ask.  
UTILITIES NOTE: The position of any existing public or private sewers, utility services, plant or apparatus shown on this drawing is believed to be correct, but no warranty to this is expressed or implied. Other such plant or apparatus may also be present but not shown. The Contractor is therefore advised to undertake his own investigation where the presence of any existing sewers, services, plant or apparatus may affect his operations.

Drawing Issue Status  
**FOR APPROVAL**

PARK PREWETT, BASINGSTOKE  
THE AVENUE  
EXTERNAL WORKS

Client

**Taylor Wimpey**

Date of 1st Issue  
27.05.2014

Drawn by  
AM

A1 Scale  
1:500

Checked by  
MW

Drawing Number  
06199/900/103

Revision  
C

**pba peterbrett**

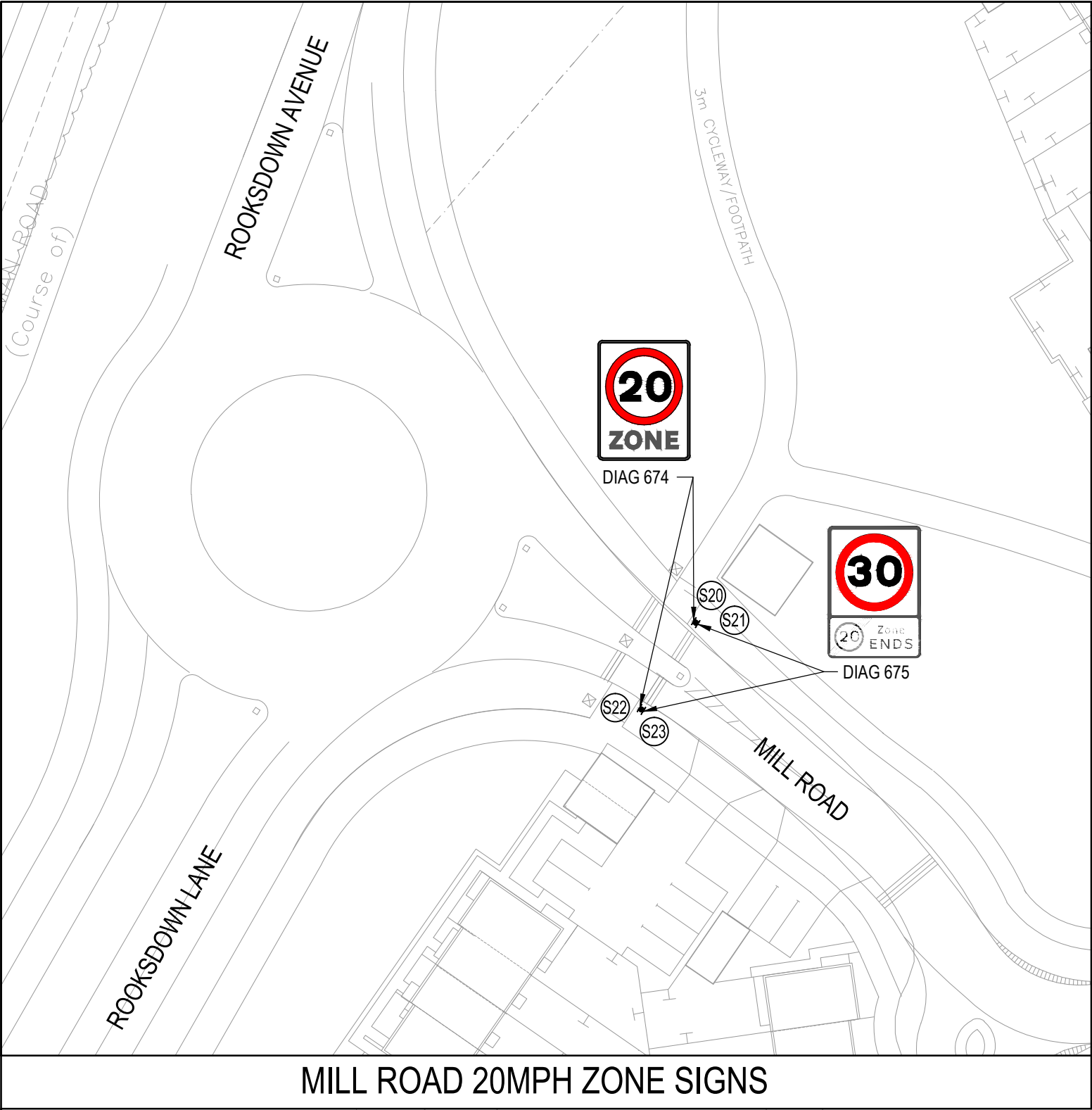
Offices throughout the UK and Europe

**www.peterbrett.com**

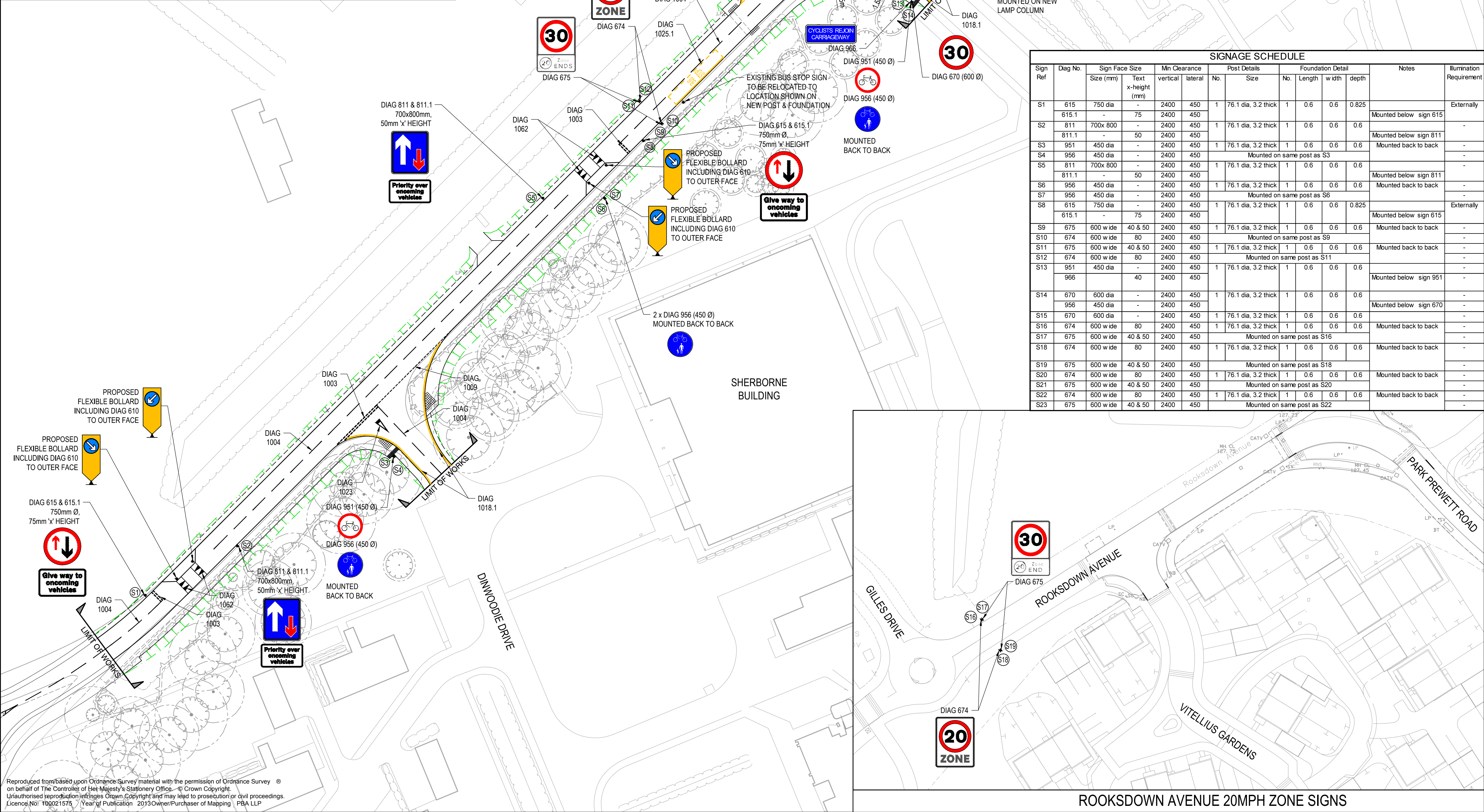
© Peter Brett Associates LLP

READING  
Tel: 0118 950 0761





MILL ROAD 20MPH ZONE SIGNS



- NOTES:
1. ALL TRAFFIC SIGNS AND ROAD MARKINGS TO COMPLY WITH 'THE TRAFFIC SIGNS REGULATIONS AND GENERAL DIRECTIONS 2002'.
  2. ROAD MARKINGS SHALL BE THERMOPLASTIC SCREED WITH APPLIED SOLID GLASS BEADS.
  3. MINIMUM MOUNTING HEIGHT CLEARANCE FOR SIGNS TO BE 2.4m FOR SHARED USE FOOTWAY/CYCLEWAY.
  4. ALL SIGNS TO BE MOUNTED ON 76.1mm OUTSIDE DIAMETER, 3.2mm THICK POSTS WITH MINIMUM FOUNDATION SIZE OF 0.6mx0.6mx0.6m.
  5. ALL SIGNS TO BE MOUNTED WITH A MINIMUM CLEARANCE OF 0.45m TO THE CARRIAGEWAY.
  6. ALL EXTERNALLY ILLUMINATED SIGNS TO BE IN ACCORDANCE WITH HCC STANDARD DETAIL HCCS/L/050B.
  7. ALL EXTERNALLY ILLUMINATED SIGN LANTERNS SHALL BE FITTED WITH 'MAYFLOWER' REMOTE MONITORING.
  8. ALL SIGN POSITIONS SHOWN ARE SUBJECT TO FINAL AGREEMENT WITH ENGINEER ON SITE.
  9. LIMIT OF WORKS TO BE AGREED WITH ADJACENT LAND OWNERS PRIOR TO COMMENCEMENT OF WORKS.

SIGNAGE SCHEDULE												
Sign Ref	Diag No.	Sign Face Size		Min Clearance		Post Details		Foundation Detail			Notes	Illumination Requirement
		Size (mm)	Text x-height (mm)	vertical	lateral	No.	Size	No.	Length	width		
S1	615	750 dia	-	2400	450	1	76.1 dia, 3.2 thick	1	0.6	0.6	0.825	Externally
S2	811	700x800	-	2400	450	1	76.1 dia, 3.2 thick	1	0.6	0.6	0.6	Mounted below sign 615
S3	951	450 dia	-	2400	450	1	76.1 dia, 3.2 thick	1	0.6	0.6	0.6	Mounted below sign 811
S4	956	450 dia	-	2400	450	1	76.1 dia, 3.2 thick	1	0.6	0.6	0.6	Mounted back to back
S5	811	700x800	-	2400	450	1	76.1 dia, 3.2 thick	1	0.6	0.6	0.6	Mounted below sign 811
S6	956	450 dia	-	2400	450	1	76.1 dia, 3.2 thick	1	0.6	0.6	0.6	Mounted back to back
S7	956	450 dia	-	2400	450	1	76.1 dia, 3.2 thick	1	0.6	0.6	0.6	Mounted back to back
S8	615	750 dia	-	2400	450	1	76.1 dia, 3.2 thick	1	0.6	0.6	0.825	Externally
S9	675	600 w ide	40 & 50	2400	450	1	76.1 dia, 3.2 thick	1	0.6	0.6	0.6	Mounted below sign 615
S10	674	600 w ide	80	2400	450	1	76.1 dia, 3.2 thick	1	0.6	0.6	0.6	Mounted back to back
S11	675	600 w ide	40 & 50	2400	450	1	76.1 dia, 3.2 thick	1	0.6	0.6	0.6	Mounted back to back
S12	674	600 w ide	80	2400	450	1	76.1 dia, 3.2 thick	1	0.6	0.6	0.6	Mounted back to back
S13	951	450 dia	-	2400	450	1	76.1 dia, 3.2 thick	1	0.6	0.6	0.6	Mounted below sign 951
S14	670	600 dia	-	2400	450	1	76.1 dia, 3.2 thick	1	0.6	0.6	0.6	Mounted below sign 670
S15	670	600 dia	-	2400	450	1	76.1 dia, 3.2 thick	1	0.6	0.6	0.6	Mounted below sign 670
S16	674	600 w ide	80	2400	450	1	76.1 dia, 3.2 thick	1	0.6	0.6	0.6	Mounted back to back
S17	675	600 w ide	40 & 50	2400	450	1	76.1 dia, 3.2 thick	1	0.6	0.6	0.6	Mounted back to back
S18	674	600 w ide	80	2400	450	1	76.1 dia, 3.2 thick	1	0.6	0.6	0.6	Mounted back to back
S19	675	600 w ide	40 & 50	2400	450	1	76.1 dia, 3.2 thick	1	0.6	0.6	0.6	Mounted back to back
S20	674	600 w ide	80	2400	450	1	76.1 dia, 3.2 thick	1	0.6	0.6	0.6	Mounted back to back
S21	675	600 w ide	40 & 50	2400	450	1	76.1 dia, 3.2 thick	1	0.6	0.6	0.6	Mounted back to back
S22	674	600 w ide	80	2400	450	1	76.1 dia, 3.2 thick	1	0.6	0.6	0.6	Mounted back to back
S23	675	600 w ide	40 & 50	2400	450	1	76.1 dia, 3.2 thick	1	0.6	0.6	0.6	Mounted back to back

PLEASE NOTE THIS DRAWING HAS NOT YET RECEIVED TECHNICAL APPROVAL AND IS THEREFORE POTENTIALLY SUBJECT TO CHANGE

D	20mph speed limit signs removed and replaced with 20mph zone signs. Sign schedule added and bus stops amended.	MW	16.09.14	SPR
C	Notes added regarding bus stop signs	MW	28.08.14	SJD
B	Give way triangles added. Western road narrowing moved to opposite side & signs amended accordingly. Additional 20mph repeater signs added. Cyclist on-ramp added.	DP	19.08.14	MW
A	Speed limit signs added	MW	16.07.14	SPR
Mark	Revision	Drawn	Date	Chkd

SCALING NOTE: Do not scale from this drawing. If in doubt, ask.  
UTILITIES NOTE: The position of any existing public or private sewers, utility services, plant or apparatus shown on this drawing is believed to be correct, but no warranty to this is expressed or implied. Other such plant or apparatus may also be present but not shown. The Contractor is therefore advised to undertake his own investigation where the presence of any existing sewers, services, plant or apparatus may affect his operations.

Drawing Issue Status

FOR APPROVAL

PARK PREWETT, BASINGSTOKE  
THE AVENUE  
ROAD MARKINGS AND TRAFFIC SIGNS

Client

**Taylor Wimpey**

Date of 1st Issue  
27.05.2014

Drawn by  
AM

A1 Scale  
1:500

Checked by  
MW

Drawing Number  
06199/900/104

Revision  
D

**pba**  
peterbrett

Offices throughout the UK and Europe  
**www.peterbrett.com**  
© Peter Brett Associates LLP  
READING  
Tel: 0118 950 0761





- NOTES:
1. PROPOSED SOAKAWAYS BASED ON A MINIMUM PERMEABILITY RATE OF  $2 \times 10^{-6}$  m/s. THE SIZING IS TO BE CONFIRMED BY ADDITIONAL INFILTRATION TESTING DURING CONSTRUCTION.
  2. LOCATION OF SOAKAWAYS SUBJECT TO SUSPECTED SOLUTION FEATURES AND CONTAMINATION CHECKS.
  3. FOR GULLY CONNECTIONS PIPE BEDDING AND TRENCH BACKFILL DETAILS REFER TO PBA DRAWING 06199/900/SD03.
  4. COVER LEVELS SHOWN ARE APPROXIMATE BASED ON LIMITED SURVEY INFORMATION AND ARE TO BE VERIFIED ON SITE.
  5. LOCATION OF EXISTING SERVICES TO BE INVESTIGATED ON SITE PRIOR TO COMMENCEMENT OF WORKS. EXACT LOCATION OF PROPOSED SOAKAWAYS TO BE CONFIRMED FOLLOWING THIS.
  6. PROPOSED CONTOURS SHOWN ARE DIAGRAMATIC AND TO BE USED FOR REFERENCE ONLY.
  7. NORMAL CONTOUR INTERVALS ARE AT 0.25m WITH PROMINENT CONTOURS AT 0.1m INTERVALS (MARKED AS BLUE LINES).
  5. LIMIT OF WORKS TO BE AGREED WITH ADJACENT LAND OWNERS PRIOR TO COMMENCEMENT OF WORKS.

- KEY:
- G PROPOSED HIGHWAY GULLY AND 150mm Ø CONNECTION (REFER TO HCC STANDARD DETAIL HCC9/D/015B)
  - PROPOSED HIGHWAY CARRIER DRAIN
  - SW PROPOSED SOAKAWAY (REFER TO HCC STANDARD DETAIL HCC9/D/075B)
  - CP PROPOSED CATCHPIT TYPE C1A 1200mm DIAMETER (REFER RO HCC STANDARD DETAIL HCC9/D/040B)

SOAKAWAY SCHEDULE				
REFERENCE	COVER LEVEL (m)	INVERT LEVEL (m)	DEPTH BELOW INVERT (m)	DIAMETER (m)
SW1	117.800	116.800	2	2.4
SW2	118.110	117.110	2	2.4
SW3	118.400	117.190	2	3
SW4	118.665	117.665	2	2.7
SW5	118.700	117.700	2	2.4
SW6	118.760	117.760	2	3
SW7	118.950	117.950	2	3
SW8	118.525	117.525	2	2.1
SW9	119.400	118.400	2	2.7
SW10	119.705	118.705	2	2.7
SW11	119.250	118.250	2	2.4
SW12	119.200	118.200	2	2.7
SW13	119.375	118.375	2	2.1

CATCHPIT SCHEDULE			
REFERENCE	COVER LEVEL (m)	INVERT LEVEL (m)	DIAMETER (m)
CP1	118.900	117.260	1.2
CP2	118.825	117.475	1.2

PLEASE NOTE THIS DRAWING HAS NOT YET RECEIVED TECHNICAL APPROVAL AND IS THEREFORE POTENTIALLY SUBJECT TO CHANGE

C	Catchpit schedule added.	MW	19.08.14	SPR
B	Tree survey & RPA information added. Soakaway locations and sizes amended. SW14 removed. Catchpits & carrier drain added to SW3. Soakaway schedule updated.	MW	14.08.14	SPR
A	Additional gullies added at crossing locations. Soakaway locations, sizes and depths amended in accordance with HCC's comments. SW14 added.	MW	01.08.14	MW
Mark	Revision	Drawn	Date	Chkd

SCALING NOTE: Do not scale from this drawing. If in doubt, ask.  
UTILITIES NOTE: The position of any existing public or private sewers, utility services, plant or apparatus shown on this drawing is believed to be correct, but no warranty to this is expressed or implied. Other such plant or apparatus may also be present but not shown. The Contractor is therefore advised to undertake his own investigation where the presence of any existing sewers, services, plant or apparatus may affect his operations.

Drawing Issue Status  
**FOR TENDER**

PARK PREWETT, BASINGSTOKE  
THE AVENUE  
DRAINAGE LAYOUT

Client

**Taylor Wimpey**

Date of 1st Issue  
27.05.2014

Drawn by  
AM

A1 Scale  
SPR

Checked by  
MW

Drawing Number  
06199/900/105

Revision  
C

**pba peterbrett**

Offices throughout the UK and Europe

**www.peterbrett.com**

© Peter Brett Associates LLP

READING  
Tel: 0118 950 0761





- NOTES:**
- ISOPACHYTES SHOWN ARE DIAGRAMATIC AND TO BE USED FOR REFERENCE ONLY.
  - LEVEL BANDING DATA SHOWN IS FROM EXISTING CARRIAGEWAY SURFACE TO PROPOSED FINISHED CARRIAGEWAY SURFACE LEVEL.

**KEY:**

SURFACE LEVEL DATA			
NUMBER	MINIMUM LEVEL	MAXIMUM LEVEL	COLOUR
1	0.00m	0.20m	Red
2	0.20m	0.25m	Orange
3	0.25m	0.30m	Yellow
4	0.30m	0.35m	Green
5	0.35m	0.40m	Cyan
6	0.40m	0.45m	Blue
7	0.45m	0.50m	Purple

PLEASE NOTE THIS DRAWING HAS NOT YET  
RECEIVED TECHNICAL APPROVAL AND IS  
THEREFORE POTENTIALLY SUBJECT TO CHANGE

A	Proposed layout updated.	MW	19.08.14	SPR
Mark	Revision	Drawn	Date	Chkd

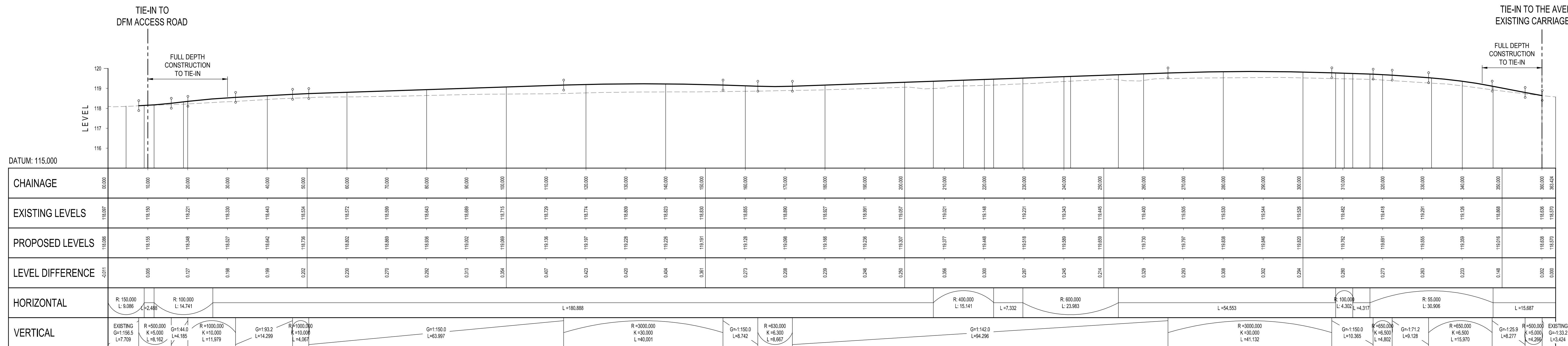
SCALING NOTE: Do not scale from this drawing. If in doubt, ask.  
UTILITIES NOTE: The position of any existing public or private sewers, utility services, plant or apparatus shown on this drawing is believed to be correct, but no warranty to this is expressed or implied. Other such plant or apparatus may also be present but not shown. The Contractor is therefore advised to undertake his own investigation where the presence of any existing sewers, services, plant or apparatus may affect his operations.

Drawing Issue Status  
**FOR TENDER**

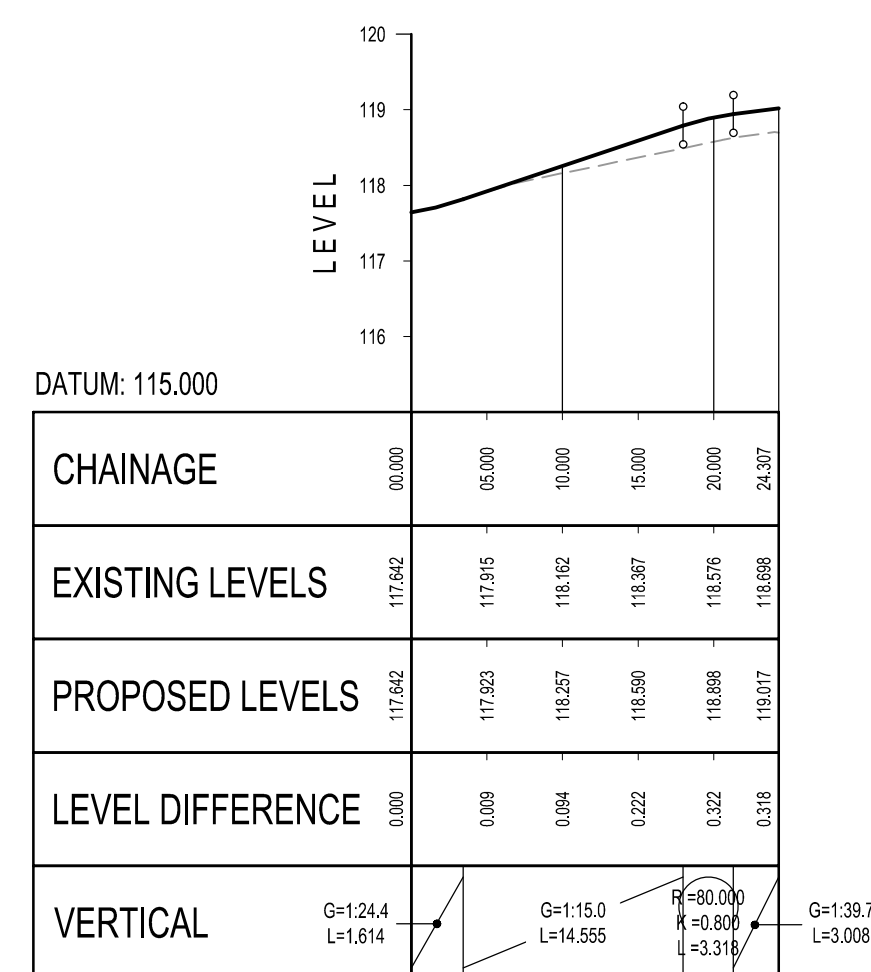
PARK PREWETT, BASINGSTOKE  
THE AVENUE  
ISOPACHYTE CONTOURS

Client <b>Taylor Wimpey</b>		 Offices throughout the UK and Europe <b>www.peterbrett.com</b> © Peter Brett Associates LLP READING Tel: 0118 950 0761
Date of 1st Issue 27.05.2014	Drawn by MW	
A1 Scale 1:500	Checked by SPR	
Drawing Number <b>06199/900/106</b>	Revision <b>A</b>	

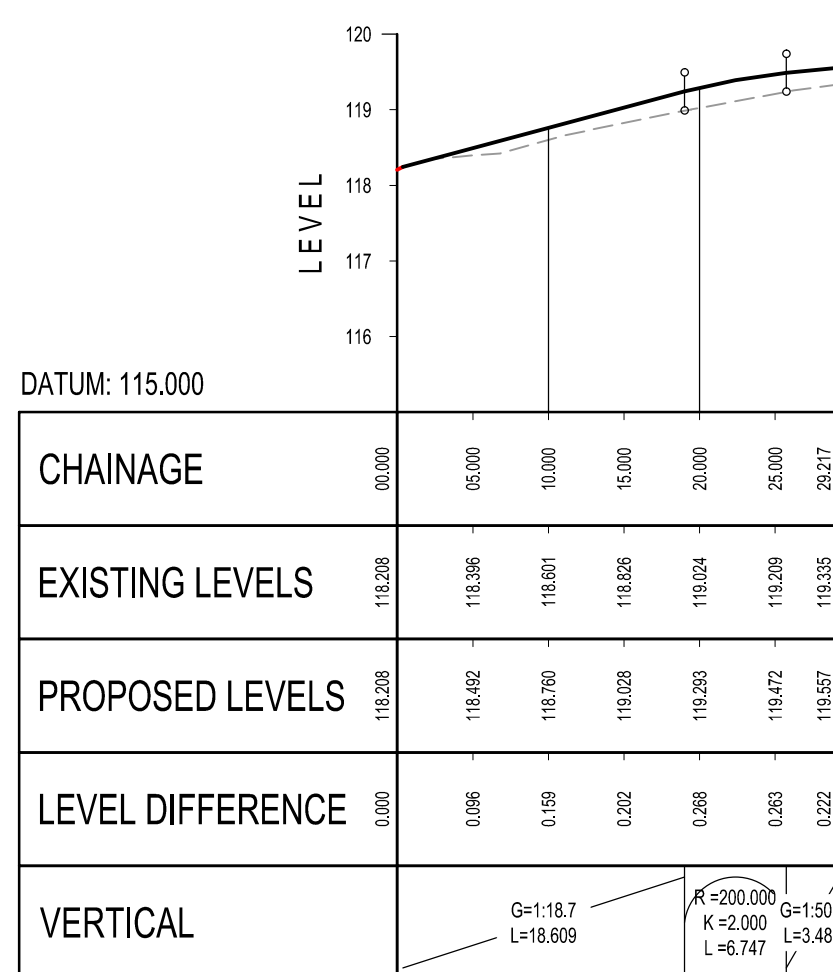




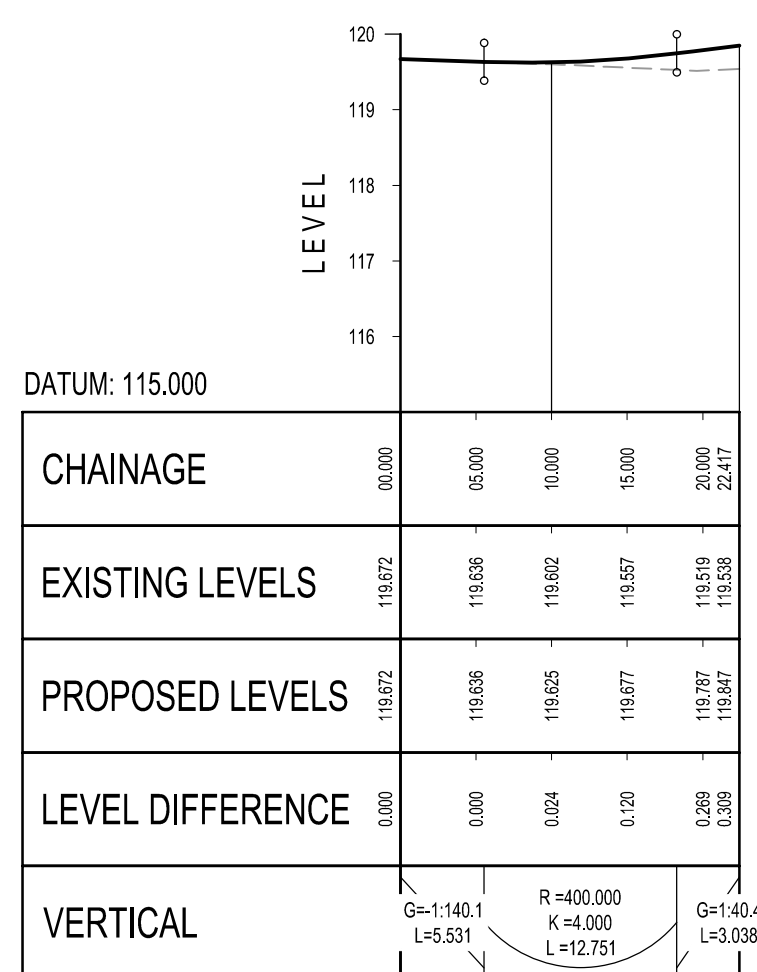
THE AVENUE - CENTRE LINE (C001) LONG SECTION  
SCALE: H 1:500, V 1:100



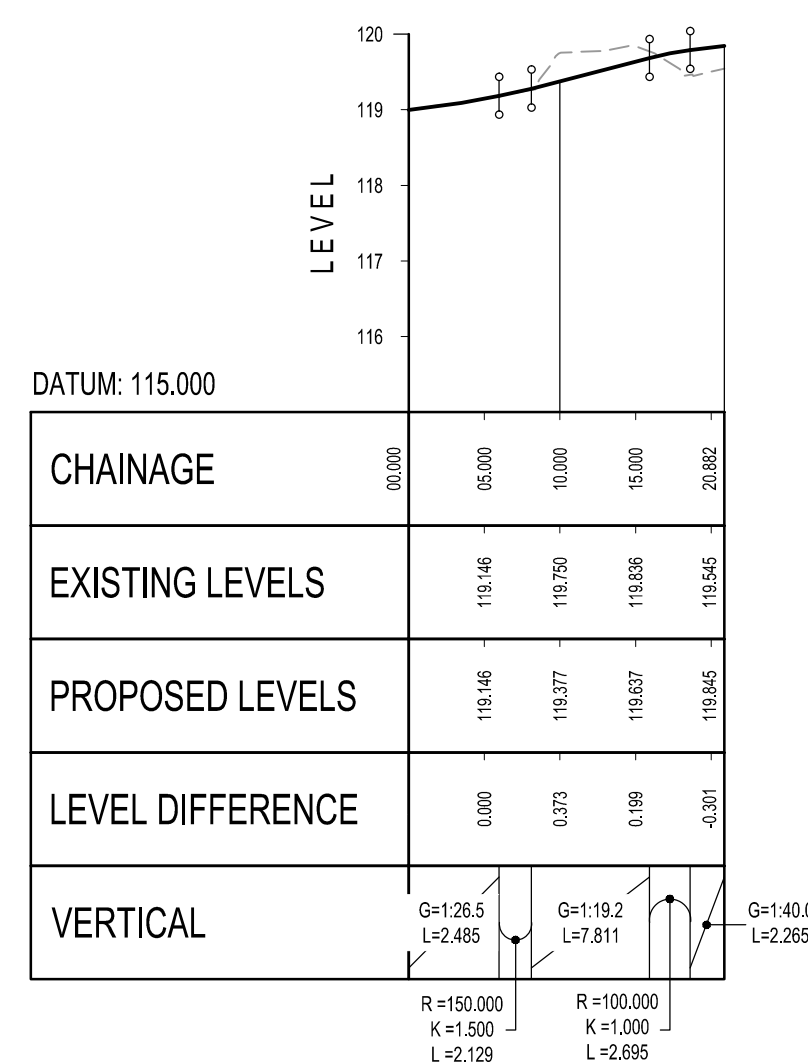
JUNCTION 1 - CENTRE LINE (JN01) LONG SECTION  
SCALE: H 1:500, V 1:100



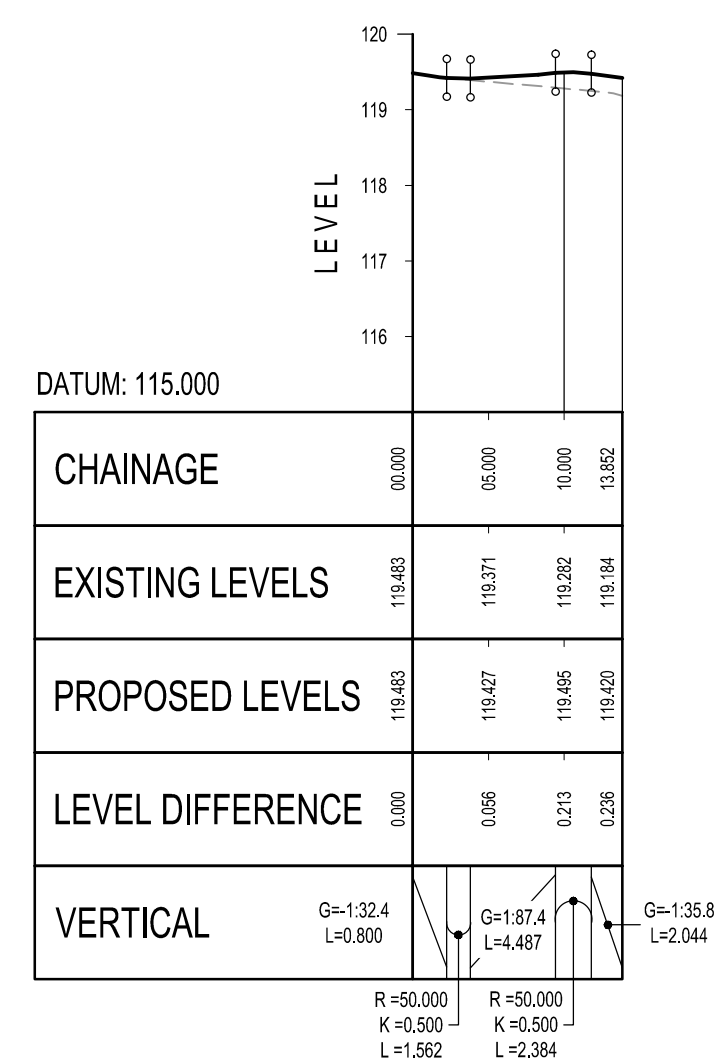
JUNCTION 2 - CENTRE LINE (JN02) LONG SECTION  
SCALE: H 1:500, V 1:100



JUNCTION 3 - CENTRE LINE (JN03) LONG SECTION  
SCALE: H 1:500, V 1:100



JUNCTION 4 - CENTRE LINE (JN04) LONG SECTION  
SCALE: H 1:500, V 1:100



JUNCTION 5 CENTRE LINE (JN05) LONG SECTION  
SCALE: H 1:500, V 1:100

- NOTES:
1. FOR CHAINAGE REFERENCES REFER TO DRAWING NUMBER 06199/900/106
  2. FOR JUNCTION LOCATIONS REFER TO DRAWING NUMBER 06199/900/102.

KEY:

--- --- --- --- --- EXISTING ROAD LEVEL

\_\_\_\_\_ PROPOSED ROAD LEVEL

PLEASE NOTE THIS DRAWING HAS NOT YET  
RECEIVED TECHNICAL APPROVAL AND IS  
THEREFORE POTENTIALLY SUBJECT TO CHANGE


A	Gradients added to junction long sections.	MW	19.08.14	SPR
Mark	Revision	Drawn	Date	Chkd

UTILITIES NOTE: The position of any existing public or private sewers, utility services, plant or apparatus shown on this drawing is believed to be correct, but no warranty to this is expressed or implied. Other such plant or apparatus may also be present but not shown. The Contractor is therefore advised to undertake his own investigation where the presence of any existing sewers, services, plant or apparatus may affect his operations.

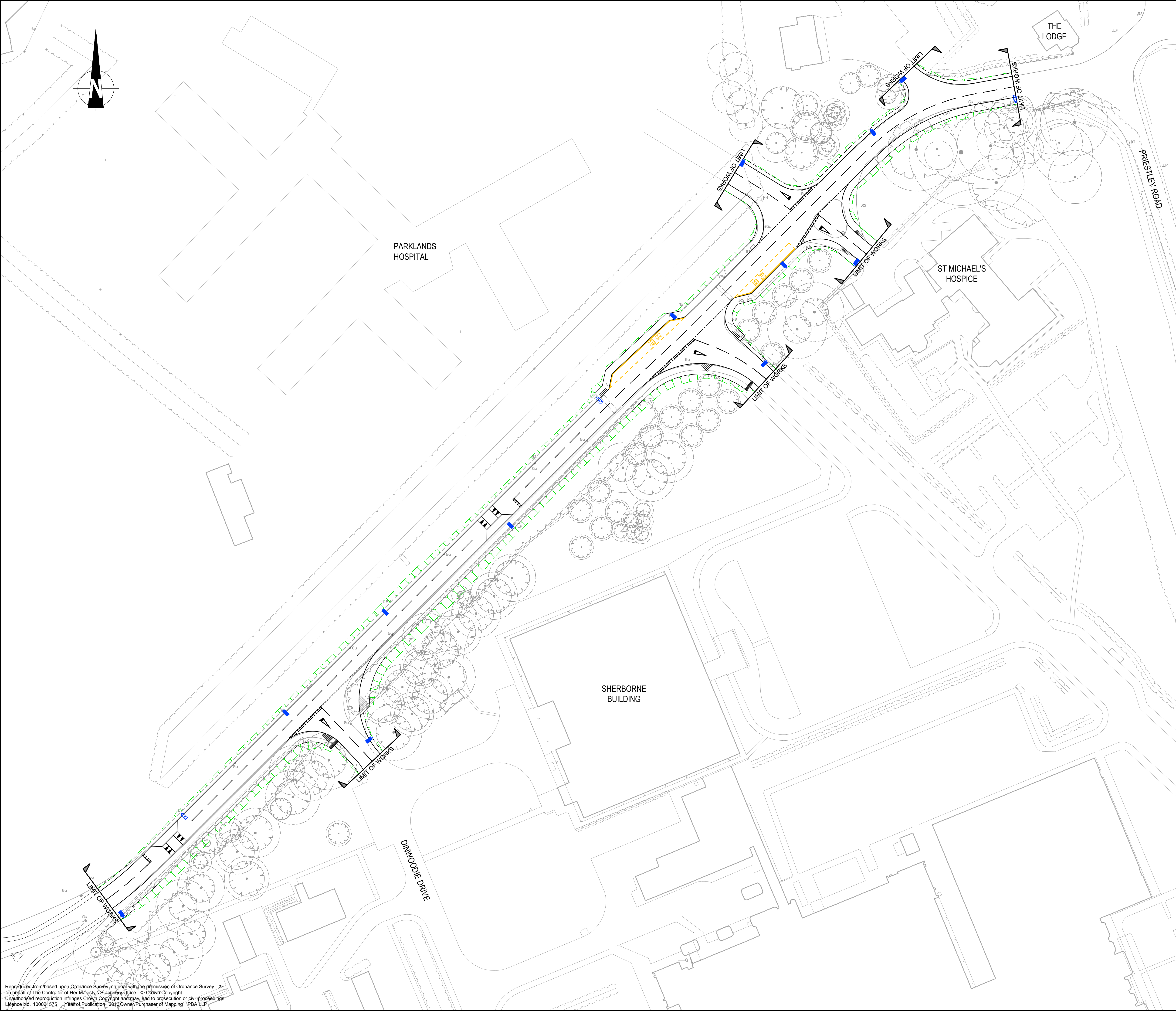
Drawing Issue Status

FOR TENDER

PARK PREWETT, BASINGSTOKE  
THE AVENUE  
PROPOSED LONG SECTIONS

Client		 <p>Offices throughout the UK and Europe</p> <p><b>www.peterbrett.com</b></p> <p>© Peter Brett Associates LLP</p> <p>READING Tel: 0118 950 0761</p>
<p><b>Taylor Wimpey</b></p>		
Date of 1st Issue 27.05.2014	Drawn by MW	
A1 Scale AS SHOWN	Checked by SPR	
Drawing Number 06199/900/107	Revision A	





- NOTES:**
1. THIS DRAWING PROPOSAL MUST BE READ IN CONJUNCTION WITH ALL OTHER RELEVANT PROJECT DRAWINGS AND SPECIFICATIONS.
  2. UTILITY INFORMATION SUCH AS UNDERGROUND AND OVER GROUND CABLES AND GAS PIPES ETC. WILL NEED TO BE CHECKED ON SITE BY INSTALLATION CONTRACTOR BEFORE EXCAVATION OR INSTALLATION OF LIGHTING EQUIPMENT.
  3. SYMBOLS INDICATE PROPOSED LOCATIONS OF LIGHTING EQUIPMENT. FOR FURTHER INFORMATION PLEASE REFER TO THE LUMINAIRE SCHEDULES AND DETAILS SHOWN.
  4. FOR DETAILS OF ALL LUMINAIRES PLEASE REFER TO THE PHILIPS LIGHTING SOLUTIONS LUMINAIRE SCHEDULE.
  5. FOR CABLE ROUTES, DRIVER LOCATIONS AND ANY ELECTRICAL WORKS ASSOCIATED WITH THE LIGHTING INSTALLATION PLEASE REFER TO THE CONTRACTORS INSTALLATION DRAWINGS AND DOCUMENTATION.
  6. LIMIT OF WORKS TO BE AGREED WITH ADJACENT LAND OWNERS PRIOR TO COMMENCEMENT OF WORKS.

- KEY:**
- EXISTING POSITIONS TO BE REPLACED WITH MINI LUMA 5.6KLM R5 NW.  
MINI LUMA R5  
LAMP(S): 12-30 DS-NW 1 1100-7850 NW LED  
CANDELA FILE 'MINI LUMA 1B R6 DS-NW 1 5600 NW LED.LDT'  
1 LAMP(S) PER LUMINAIRE, 5600 INITIAL LUMENS PER LAMP  
MAINTENANCE FACTOR = 0.670, WATTS PER LUMINAIRE = 1  
OUTREACH (FROM MOUNTING AXIS TO PHOTOMETRIC CENTER)= 400mm  
TILT ANGLE= 5 DEG  
MOUNTING HEIGHT= 6m  
NUMBER LOCATIONS= 3, NUMBER LUMINAIRES= 3  
KW ALL LOCATIONS= 0.0
  - PROPOSED MINI LUMA 5.6KLM R5 NW.  
MINI LUMA R5  
LAMP(S): 12-30 DS-NW 1 1100-7850 NW LED  
CANDELA FILE 'MINI LUMA 1B R6 DS-NW 1 5600 NW LED.LDT'  
1 LAMP(S) PER LUMINAIRE, 5600 INITIAL LUMENS PER LAMP  
MAINTENANCE FACTOR = 0.670, WATTS PER LUMINAIRE = 1  
OUTREACH (FROM MOUNTING AXIS TO PHOTOMETRIC CENTER)= 400mm  
TILT ANGLE= 5 DEG  
MOUNTING HEIGHT= 6m  
NUMBER LOCATIONS= 12, NUMBER LUMINAIRES= 12  
KW ALL LOCATIONS= 0.0

PLEASE NOTE THIS DRAWING HAS NOT YET  
RECEIVED TECHNICAL APPROVAL AND IS  
THEREFORE POTENTIALLY SUBJECT TO CHANGE

A	Proposed layout updated.	MW	19.08.14	SPR
Mark	Revision	Drawn	Date	Chkd

SCALING NOTE: Do not scale from this drawing. If in doubt, ask.  
UTILITIES NOTE: The position of any existing public or private sewers, utility services, plant or apparatus shown on this drawing is believed to be correct, but no warranty to this is expressed or implied. Other such plant or apparatus may also be present but not shown. The Contractor is therefore advised to undertake his own investigation where the presence of any existing sewers, services, plant or apparatus may affect his operations.

Drawing Issue Status  
**FOR TENDER**

**PARK PREWETT, BASINGSTOKE  
THE AVENUE  
PROPOSED STREET LIGHTING**

Client

**Taylor Wimpey**

Date of 1st Issue  
25.07.14

Drawn by  
AM

A1 Scale  
1:500

Checked by  
MW

Drawing Number  
**06199/900/108**

Revision

**pba**  
peterbrett

Offices throughout  
the UK and Europe  
**www.peterbrett.com**  
© Peter Brett Associates LLP  
READING  
Tel: 0118 950 0761